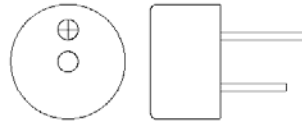


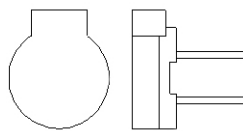
# Product APPLICATION Guide



Electromagnetic- PC Pins

## Electromagnetic Indicators (with Circuitry)

Part Number	Sound Level @ 10 cm	Freq. (Hz)	Operating Voltage (Vdc)	Current (mA)	Dia x Hgt (mm)	PC Pin Pitch (mm c/c)	Comments
<b>Soft Sound Level- Continuous Tone</b>							
PB-09N23P-01Q	75 @ 1.5Vdc	2300	1.25 - 2.5	25 @ 1.5Vdc	9 x 5.5	4	
PB-09N23P-03Q	82 @ 3Vdc	2300	2 - 4	30 @ 3Vdc	9 x 5.5	4	
PB-12N23P-01Q	80 @ 1.5Vdc	2300	1.25 - 2.5	25 @ 1.5Vdc	12 x 10	7.6	Sealed; Tube
<b>Medium Sound Level- Continuous Tone</b>							
PB-12N32MP-05AQ	85 @ 5Vdc	3200	3 - 7	50 @ 5Vdc	12 x 7.5	7.6	Sealed
PB-12N23P-03Q	85 @ 3Vdc	2300	2 - 5	30 @ 3Vdc	12 x 10	7.6	Sealed; Tube
PB-12N23P-05Q	85 @ 5Vdc	2300	4 - 7	30 @ 5Vdc	12 x 10	7.6	Sealed; Tube
PB-12N13P-09Q	85 @ 9Vdc	2300	7 - 11	50 @ 9Vdc	12 x 10	7.6	Sealed; Tube
PB-12N23P-12Q	85 @ 12Vdc	2300	9 - 15	50 @ 12Vdc	12 x 10	7.6	Sealed; Tube



Electromagnetic- PC Pins

## Electromagnetic Transducers (No Circuitry)

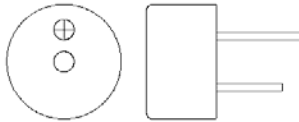
Part Number	Sound Level @ 10 cm	Freq. (Hz)	Operating Voltage (Vpp)	Current (mA)	Dia x Hgt (mm)	Coil Resistance (Ohms)	PC Pin Pitch (mm c/c)	Comments
<b>Soft Sound Level- Transducer (No Circuitry)</b>								
PB-09C27PE-01AQ	80 @ 1.5Vpp	2731	1.25 - 2	70 @ 1.5Vpp	10.5 x 4	5.5	4	
<b>Medium Sound Level- Transducer (No Circuitry)</b>								
PB-09C27PE-03AQ	85 @ 3Vpp	2731	2 - 5	70 @ 3Vpp	10.5 x 4	15	4	
PB-09C27PE-05AQ	85 @ 5Vpp	2731	4.5 - 5.5	70 @ 5Vpp	10.5 x 4	30	4	



Electromagnetic- PC Pins

## Electromagnetic Transducers (No Circuitry)

Part Number	Sound Level @ 10 cm	Freq. (Hz)	Operating Voltage (Vpp)	Current (mA)	LxWxH (mm)	Coil Resistance (Ohms)	PC Pin Pitch (mm c/c)	Comments
PB-1820PL-06AQ	85 @ 6Vpp	2250	3 - 10	40 @ 6Vpp	18x14x11	60	6.5	Sealed



Electromagnetic- PC Pins

## Electromagnetic Transducers (No Circuitry)

Part Number	Sound Level @ 10 cm	Freq. (Hz)	Operating Voltage (Vpp)	Current (mA)	Dia x Hgt (mm)	Coil Resistance (Ohms)	PC Pin Pitch (mm c/c)	Comments
<b>Soft Sound Level- Transducer (No Circuitry)</b>								
PB-0627PE-05AQ	70 @ 5 Vpp	2731	4 - 5	90 @ 5Vpp	6.6 x 3.6	25	3	
PB-0927PQ	75 @ 5Vpp	2731	4.5 - 5.5	75 @ 5Vpp	9 x 5.4	25	4	
PB-1221PQ	80 @ 1.5Vpp	2048	1.25 - 2.5	18 @ 1.5Vpp	12 x 8.5	42	6.5	
PB-1221PEQ	80 @ 1.5Vpp	2048	1.25 - 2.5	15 @ 1.5Vpp	12 x 10	42	6.5	Sealed
PB-1620PQ	80 @ 1.5Vpp	2048	1.25 - 2.5	15 @ 1.5Vpp	16 x 14	40	7.6	Sealed
<b>Medium Sound Level- Transducer (No Circuitry)</b>								
PB-0927PD1AQ	85 @ 5Vpp	2700	3 - 7	80 @ 5Vpp	9 x 5.5	25	4	
PB-1220PQ	85 @ 1.5Vpp	2048	1.25 - 2.5	40 @ 1.5Vpp	12 x 8.5	16	6.5	
PB-1226PEAQ	85 @ 1.5Vpp	2600	1.1 - 3	30 @ 1.5Vpp	12 x 9.5	15	6.5	
PB-1224PEQ	85 @ 1.5Vpp	2400	1.25 - 2.5	32 @ 1.5Vpp	12 x 9.5	16	6.5	Sealed
PB-1224PE-05Q	85 @ 5Vpp	2400	4.5 - 5.5	50 @ 5Vpp	12 x 9.5	45	6.5	Sealed
PB-1224PE-12Q	85 @ 12Vpp	2400	9 - 15	60 @ 12Vpp	12 x 9.5	140	6.5	Sealed
PB-1220PEQ	85 @ 1.5Vpp	2048	1.25 - 2.5	32 @ 1.5Vpp	12 x 10	16	6.5	Sealed
PB-1420PL-03AQ	85 @ 3Vpp	2000	1 - 4	25 @ 3Vpp	14 x 5	40	7.6	
PB-1621PQ	85 @ 5Vpp	2048	4 - 7	60 @ 5Vpp	16 x 14	68	7.6	Sealed
PB-1622PQ	85 @ 12Vpp	2048	10 - 14	40 @ 12Vpp	16 x 14	145	7.6	Sealed

Call 317-612-1000 or Visit [www.mallory-sonalert.com](http://www.mallory-sonalert.com) for More Details